

Model: Model T-C1		Date: 20-Apr-04	No.: MB174001
Modified Article: Parts Catalog Correction		Prepared by: A.Ishiyama	
From: 1st Technical Support Sec. Service Support Dept.			
Reason for Modification:	<input checked="" type="checkbox"/> Parts catalog correction <input type="checkbox"/> To facilitate assembly <input type="checkbox"/> Part standardization	<input type="checkbox"/> Vendor change <input type="checkbox"/> To improve reliability	<input type="checkbox"/> To meet standards ()
Modification Schedule	The new part is available from the first mass production.		

Please apply the following correction to your Parts Catalogs.

Incorrect Part Number	Correct Part Number	Description	Q'ty	Int	Page	Index	Note
B1749740	B1749744	One Touch Key Sheet -English	1→1	- / -	6	15-1	

Model: Model T-C1		Date: 24-Jun-04	No.: MB174002
Modified Article: Parts Catalog Correction		Prepared by: A.Ishiyama	
From: 1st Technical Support Sec. Service Support Dept.			
Reason for Modification:	<input checked="" type="checkbox"/> Parts catalog correction <input type="checkbox"/> To facilitate assembly <input type="checkbox"/> Part standardization	<input type="checkbox"/> Vendor change <input type="checkbox"/> To improve reliability	<input type="checkbox"/> To meet standards ()
Modification Schedule	The new part is available from the first mass production.		

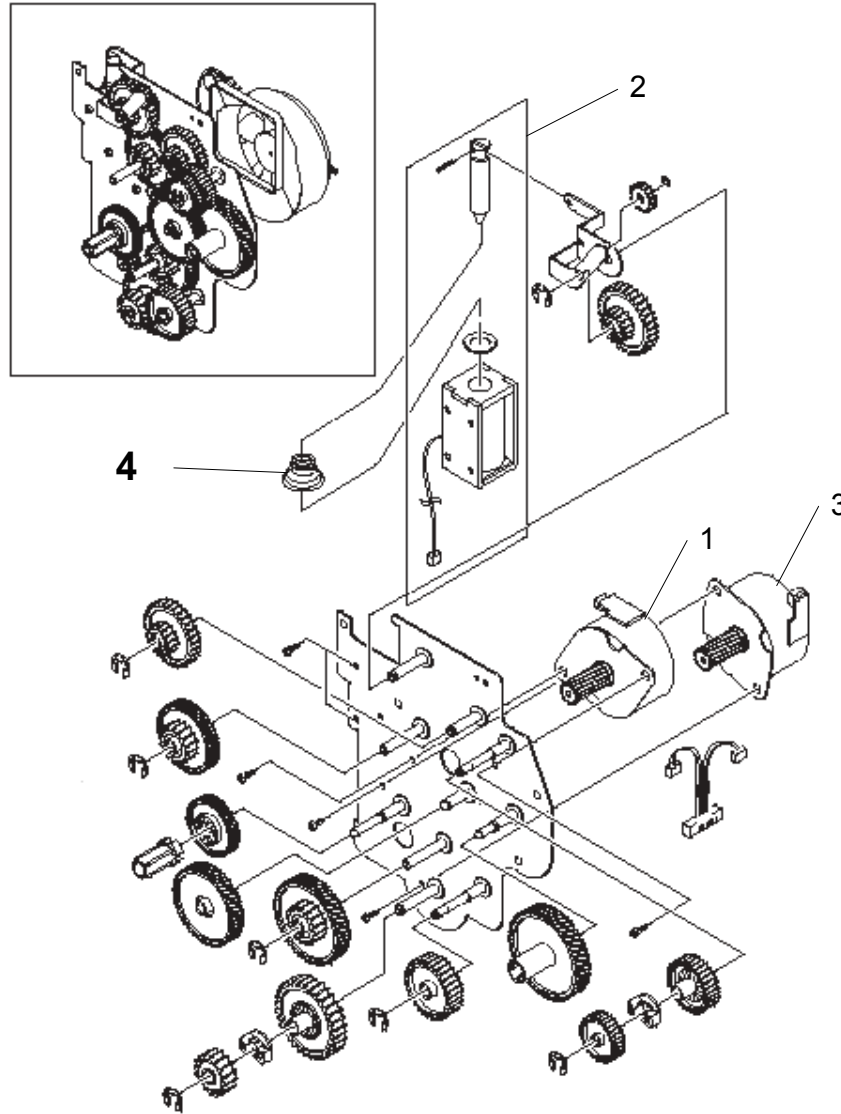
Please add the following to your Parts Catalogs (previously missing).

Note: See the illustration on the next page.

Incorrect Part Number	Correct Part Number	Description	Q'ty	Int	Page	Index	Note
	B1749745	Solenoid Spring - Duplex	0→1	- / -	16	4	

Model: Model T-C1	Date: 24-Jun-04	No.: MB174002
-------------------	-----------------	---------------

11. DRIVE ASSEMBLY



Index No.	Part No.	Description	Q'ty	B174 17
1	B1749714	STEPPING MOTOR - M49SP-2K	1	O
2	B1749717	SOLENOID - DUPLEX	1	O
3	B1749720	STEPPING MOTOR - M4PSP-2NK	1	O
4	B1749745	SOLENOID SPRING - DUPLEX	1	O

Model: Model T-C1		Date: 06-Jun-05	No.: MB174003
Modified Article: Parts Catalog Correction		Prepared by: T. Shintani	
From: 1st Technical Support Sec. Service Support Dept.			
Reason for Modification:	<input checked="" type="checkbox"/> Parts catalog correction <input type="checkbox"/> To facilitate assembly <input type="checkbox"/> Part standardization	<input type="checkbox"/> Vendor change <input type="checkbox"/> To improve reliability	<input type="checkbox"/> To meet standards ()
Modification Schedule	The new part is available from the first mass production.		

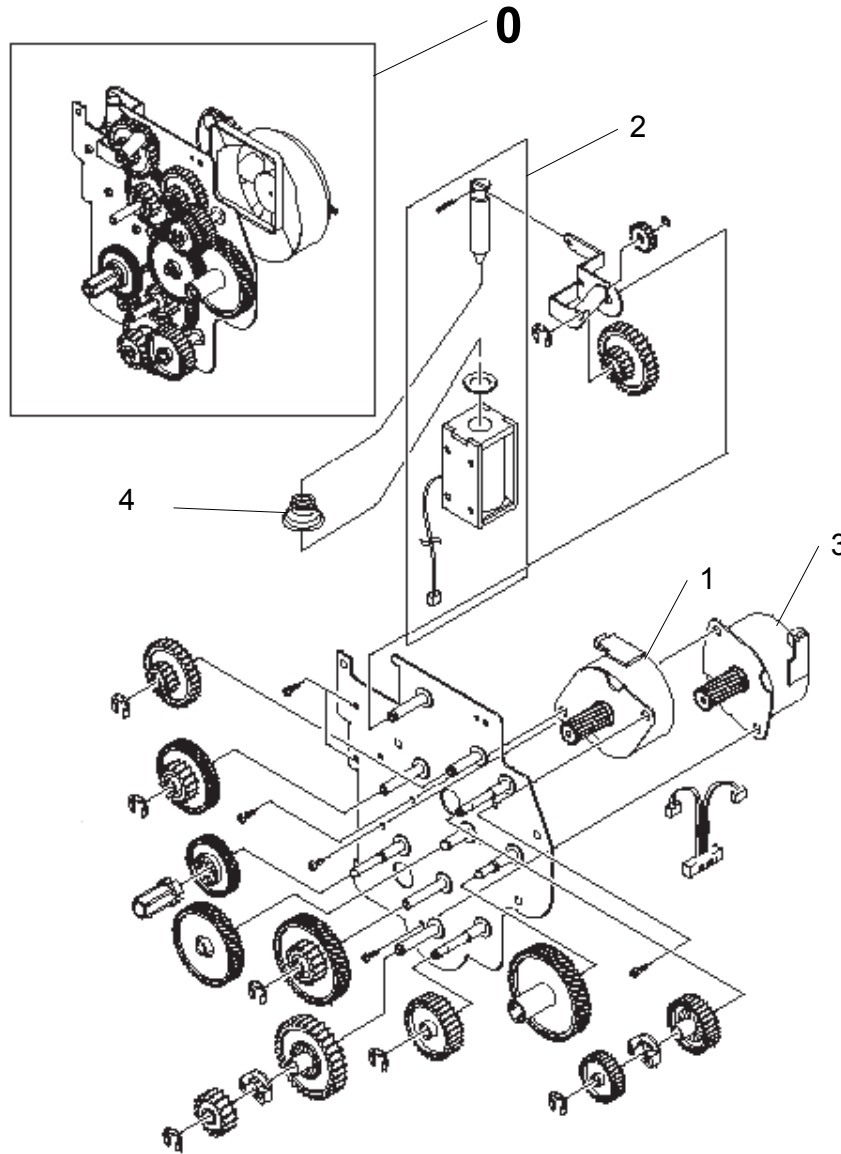
Please add the following to your Parts Catalogs (previously missing).

Note: Corresponding illustration on the next page.

OLD Part Number	NEW Part Number	Description	Q'ty	Int	Page	Index	Note
-	B1749746	Driver Ass'y	0→1	- / -	16	0	

Model: Model T-C1	Date: 06-Jun-05	No.: MB174003
-------------------	-----------------	---------------

11. DRIVE ASSEMBLY



Index No.	Part No.	Description	Q'ty	B174 17
0	B1749746	DRIVE ASS'Y	1	O
1	B1749714	STEPPING MOTOR - M49SP-2K	1	O
2	B1749717	SOLENOID - DUPLEX	1	O
3	B1749720	STEPPING MOTOR - M4PSP-2NK	1	O
4	B1749745	SOLENOID SPRING - DUPLEX	1	O

Model: Model T-C1	Date: 20-Jun-05	No.: MB174004
-------------------	-----------------	---------------

Modified Article: Paper End Actuator		Prepared by: A. Ishiyama	
From: 1st Technical Support Sec. Service Support Dept.			
Reason for Modification:	<input checked="" type="checkbox"/> Parts catalog correction <input type="checkbox"/> To facilitate assembly <input type="checkbox"/> Part standardization	<input type="checkbox"/> Vendor change <input type="checkbox"/> To improve reliability	<input type="checkbox"/> To meet standards ()
Modification Schedule	The new part is available from the first mass production.		

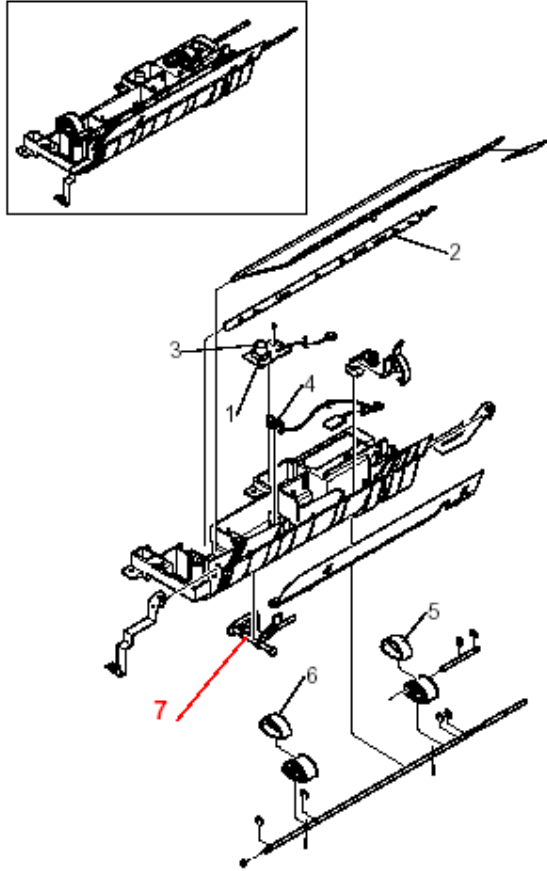
OLD Part Number	NEW Part Number	Description	Q'ty	Int	Page	Index	Note
-	B1749747	PAPER END ACTUATOR	0→1	- / -	15	7	

Change: This part was added.

Reason: A request was received from the field.

Note: See the illustration on the next page.

10. PICK-UP ASSEMBLY



B1740910.WMF

Index No.	Part No.	Description	Q'ty	B174
				17
1	B1749703	TONER SENSOR - TX	1	O
2	B1749704	QUENCHING LAMP	1	O
3	B1749706	LENS - TONER SENSOR	1	O
4	B1749707	PAPER FEED AND END SENSORS	1	O
5	B1749709	RUBBER - PAPER PICK-UP : RIGHT	1	O
6	B1749710	RUBBER - PAPER PICK-UP : LEFT	1	O
7	B1749747	PAPER END ACTUATOR	1	O